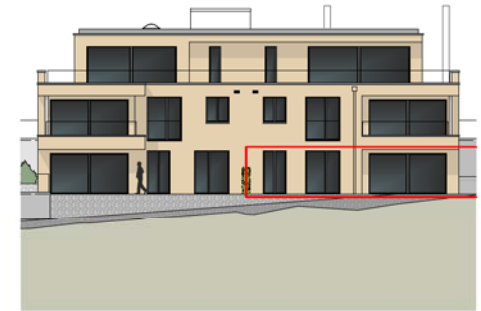
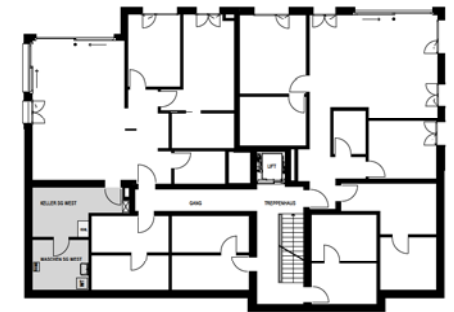


3 1/2-Zimmer-Sockelgeschosswohnung West 93.2 m² NWF



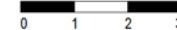
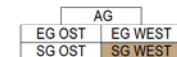
NORDFASSADE 1:300



SOCKELGESCHOSS 1:300



MASSSTAB 1:100



WOHNUNG SG WEST

Wohnen/ Essen	33.6 m²
Küche	8.4 m²
Eltern/ Ankleide	16.8 m²
Bad / Du/ WC	6.9 m²
Zimmer	12.0 m²
Du/ WC	5.2 m²
Entrée/ Korridor	10.3 m²

Total Nettowohnfläche	93.2 m²
Keller	11.1 m²
Waschen	9.0 m²
Landanteil	113.4 m²

Total Nettonutzfläche	226.7 m²
Parkbox	24/ 25